



incoveca
it's in our nature

Company Presentation

Granite, Marble, Travertine and Limestone from
Portugal and all over the world!



it's in our nature!!



Production according to European Standards

INCOVECA GRANITOS SA.....	4
Overview	4
The group investments	4
Quality.....	5
Products	6
Prospects	6
References of some important projects.....	7
Location	15
Caparrosa – Tondela	15
Mundão – Viseu.....	15
Veiga – Sernancelhe.....	15
Transport to our facilities	16
Reception of the blocks.....	16
Processing	16
Processing of the non-standard material (Tondela)	16
Primary Sawing:	17
Surface Polishing.....	17
Quality Control	19
Packing.....	19
Processing of the standard material (Mundão).....	20
Primary Sawing.....	20
Surface Finishing	20
Quality Control of stripes.....	21
Quality Control of material.....	21
Packing and reference of the material	21
Sea transportation to destination seaport.....	22

INCOVECA GRANITOS SA

Overview

Incoveca Granitos, SA was created by Silvino do Santos Paiva in 1979. Initially, it was only designed for civil construction and public works but soon directed its activity to the manufacture of ornamental stones with the construction of the Sernancelhe factory.

Since its beginning, the company has clearly understood the importance between the extracting and transforming sectors, starting prospecting, licensing and exploiting several granite quarries located in the region where it lies.

Incoveca Granitos, SA underwent a sturdy technological development, won a sound position on the domestic and external markets and in 1993 acquired the factory units of the Mundão industrial zone expanding its range of products by manufacturing calibrated, polished and bevelled granite tiles in 1 cm in thickness.

The company's structural growth was fully achieved by adding the Caparrosa – Tondela factory, which is the country's largest transforming plant of ornamental granites. Incoveca Granitos, SA inaugurated a complete new processing plant exclusively for marbles, limestone and travertine, coming from Portugal and all over the world, equipped with the most up dated Simec-system, thus converting itself in to the country's largest company of ornamental stone.

The group investments

Besides these three plants that every year are re-equipped with new machines always aiming at reaching the best quality, an increase in productivity and consequent competitive position, the group sustains a strong entrepreneurial dynamism having in the last few years diversified its investments both by the implementation of affiliates abroad and by domestic investments in companies of this particular area of activity, namely the one of ornamental stones.

The group also maintains a sturdy growth in the extracting sector, prospecting, licensing and operating new quarries either in Portugal or in foreign countries, currently relying on a extraction capacity of 20.000 m³/ year.

In its plants, the company disposes of ample transforming areas with rationally organized layouts as well as of large spaces intended for loading, unloading and packing the finished product.

By means of several innovative technologies, all the stages of the manufacturing process are now fully automated, with the latest sawing and cutting equipment, such as water-jet and diamond-wired cutters, finishing machines provided with numerical control viewing the precise and effective manufacture of all types of specific products.

The management of the different factory units is made using a computer network (PHC integrated software) by means of which it is possible to jointly manage the material stocks, the preparation of the orders received, the demands for production and the invoicing thereof. This system enables us to monitor, in real time, every order-processing phase.



Factory of Caparrosa / Tondela

Quality

Incoveca, Granitos SA has followed its structural growth together with the training of qualified staff, skilled at the different stages that constitute the manufacturing process. The company does its best for the actual implementation of a quality policy covering all those stages in an attempt to minimize any possible failure in the final product.

This steady search for quality has also been favoured by the acquisition of the latest technological equipments by means of which the possibility of error is reduced at its minimum. Huge human efforts and unhealthy working conditions that characterize some of this branches industries are not visible at Incoveca, Granitos SA as the high technological level of our equipment potentates our workers productivity as well as an effective quality control.

Products

Incoveca, Granitos SA is the largest Portuguese industrial group in the sector of ornamental granites, marble, limestone and travertine and its annual average production capacity is as follows:

- 1- Extracting capacity: 20.000 m³
- 2- Total sawing capacity: 1.188.000 m²
 - 2.1- Sawing capacity with multi-blade gang saw (main thickness= 3 cm): 420.000 m²
 - 2.2- Sawing capacity with diamond wire block cutter (main thickness= 10 cm): 18.000 m²
 - 2.3- Sawing capacity with 80-Blade block cutter (1; 1,5 and 2 cm thick.): 500.000 m²
 - 2.4- Sawing, resin and polishing capacity for Marble, Limestone and Travertine: 250.000 m²
- 3- Total cutting and transforming capacity: 717.000 m²
 - 3.1- Calibrated, Polished and bevelled granite tiles measuring 30,5 x 30,5 cm/ 40 x 40 cm and 1; 1,5; 2 and 3 cm thick: 415.000 m²
 - 3.2- Granite pieces cut to size (main thickness= 3 cm): 302.000 m²

Part of our surplus resulting from sawing is intended for the production of semi-finished material (granite slabs varying in thickness and finish) and channelled to smaller transforming industries either in the country or abroad, to wholesalers / stokers and agents who distribute and trade our product on different markets.

Prospects

Having reached a very significant dimension and keeping up its present-day structures, Incoveca, Granitos SA will endeavour to increase its productivity, quality standards and competitiveness by a continuous update so that it may meet the ever-growing demand of domestic markets and strengthen its position on international markets.

References of some important projects

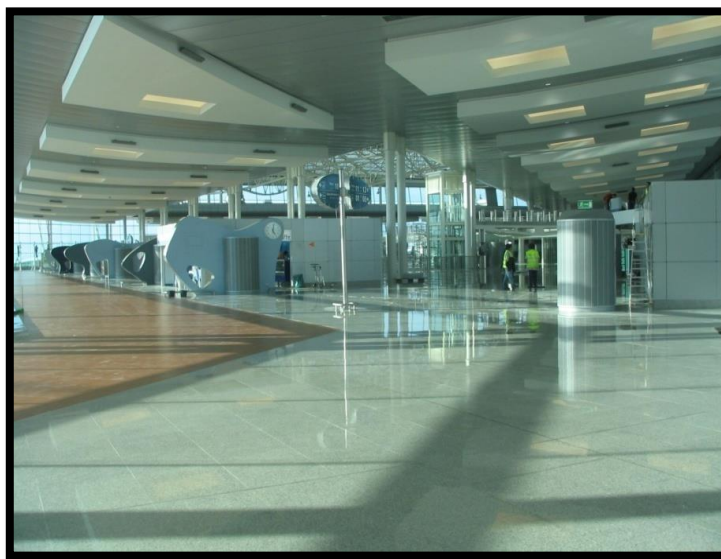
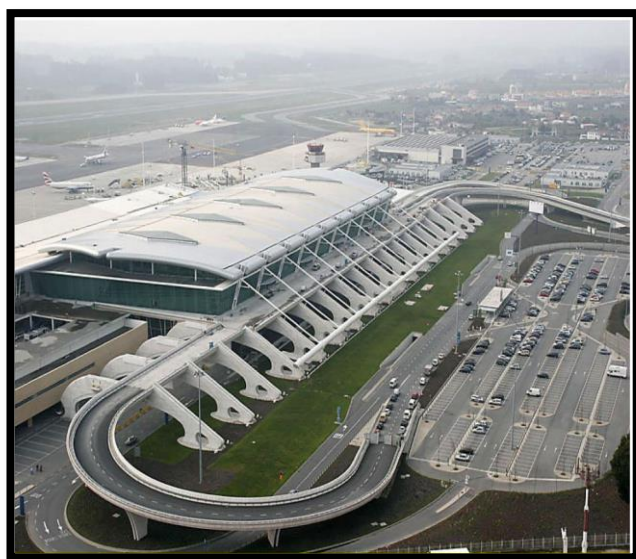
Local	Project	Material	Quantity
Luanda, Angola	V.I.P. House of Sonangola	Special pieces - Limestone	
Lisbon, Portugal	Centro Ismaili – Islamic centre	Rosa Porrinho	7.000 m ²
Cascais – Lisbon – Portugal	Palacio de Justica – Court house of the Cascais County	Branco Coral	8.000 m ²
Porto – Portugal	Norte Shopping (Shopping Mall)	Rio Branco / Negro Impala	7.000 m ²
Braga – Portugal	Braga Parque (Shopping Mall)	Amarelo Macieira Negro Impala Branco Micaela	18.000 m ²
Lisboa – Portugal	Feira Nova – (Shopping Mall)	Cinza Evora	6.000 m ²
Loures – Lisbon - Portugal	Palacio de Justica – Court House of the Loures County	Branco Coral	7.000 m ²
Lisboa Portugal	Urbatlantico – Apartment Blocs	Giallo Veneziano	30.000 m ²
Dublin – Ireland	Central Bank	Zira Grey	200 lm of massive pieces
Dublin - Ireland	Woodford Project	Zira Grey	1.500 m ²
London – United Kingdom	Holborn Place (Office and Apartment complex)	Zira Grey / Amarelo Macieira	4.000 m ²
Düsseldorf - Germany	Price, Waterhouse & Coppers – Office Building	Cinza Antas	4.000 m ²
Düsseldorf - Germany	Mannesmann Mobilfunk D2 – Office Building	Cinza Antas	8.000 m ²
Hamburg - Germany	Vereins & Westbank Rendsburg	Cinza Antas	900 m ²
Munich - Germany	U-Bahnhof Westfriedhof – Underground train Station	Branco Micaela	2.000 m ²
Neuss - Germany	Euromoda – (centro comercial)	Rosa Monção	17.000 m ²
Stuttgart - Germany	Flughafen Dienstleistungsgebäude P4 – Office buildings	Cinza Antas	1.000 m ²
Wuppertal - Germany	ECE – City Arkaden – Shopping Centre	SPI	1.500 m ²
Helsinki - Finland	Rasstilla Underground Station	Cinza Antas	1.500 m ²
Brussels - Belgium	Mercedes Testing Centre	Cinza Antas	2.500 m ²
Dublin - Ireland	Trinity College of Dublin	Zira Grey	2.700 m ²
Dublin - Ireland	Maynooth Castle (Massive pieces, Floor and wall)	Amarelo Macieira	500 m ²
Dublin - Ireland	Trintek	Zira Grey	2.500 m ²
London, United Kingdom	Royal Victoria Square	Cinza Antas	6.000 m ²
Porto, Portugal	Palacio de Justica de Matosinhos – Court House of the Matosinhos County	Pedras Salgadas	3.000 m ²

Local	Project	Material	Quantity
Riyadh, Saudi Arabia	Kingdom Centre – Shopping and Office Building	Bianco Arno Negro Impala Rosa Porrinho	32.000 m ²
Brussels, Belgium	Douwe Egberts – Office Bldg	Red Guaimir	6.000 m ²
Warsaw, Poland	Marriott Hotel	Verde S. Francisco	4.600 m ²
Porto, Portugal	Castelo do Prado – Apartment Building	Cinza Ariz	10.000 m ²
Lisboa, Portugal	Sede BPN – Rua António Augusto Aguiar	Moleanos e Rosa Porrinho	8.000 m ²
Tokio, Japan	Metro Station – Shopping Centre (Cladding)	Moleanos	500 m ²
Tokio, Japan	Maranouchi Tower – Office and apartment store	Gran Beije	20.000 m ²
Cascais, Lisbon, Portugal	Palacio de Justica – Court House of the Cascais County	Branco Coral	7.000 m ²
Viseu, Portugal	Palacio de Justica – Court House of the Viseu County	Negro Favaco Cinza Ariz	8.000 m ²
Eschborn, Germany	ARCOR – Main offices	Branco Coral	11.500 m ²
Essen, Germany	Gruga Park – Office Building	Branco Micaela	8.000 m ²
S.J. Madeira, Portugal	Palacio de Justica – Court House of the S. J. Madeira	Red Guaimir	3.000 m ²
Dublin, Irland	Microsoft Project (cladding)	Moleanos	2.000 m2
Dublin, Irland	School of Nursing	Pedras Salgadas	2.000 m2
Dublin, Irland	EPDC 5 (Microsoft Headquarters in Ireland)	Moleanos (cladding) Moca Crème (Floor)	900 m2 200 m2
Munich, Germany	Hotel of 2º Terminal Airport of Munich	Negro Aracruz	Massive Pieces (30 cm thick.) 400 m2
Barcelos, Portugal	Barcelos Stadium (cladding)	Amarelo Macieira	2.000 m2
P.L.M.	Bank Atlântico	Rosa Aronjes	10.000 m2
Madeira, Portugal	Commercial and habitation complex of Azenha (Madeira)	Rosa Monção	2.000 m2
Grupo Banco Comercial Português	Bank B.C.P.	Multi-Color Red	10.000 m2
Lisboa, Portugal	Holmes Places- Lisboa	Negro impala Moleanos	1.000 m2
Vila Nova de Gaia, Portugal	Central office of Amorim Group	Ataija (NL)	1.200 m2
Marquês de Pombal – Lisboa, Portugal	Marquês de Pombal	Branco Micaela	1.100 m2
Braga, Portugal	Forum Vizela (Shopping Mall)	Amarelo Real Cinzento antas	8.000 m2
Aachen, Germany	BMW – Autohaus Kohl GmbH – Office Building and Exhibition areas	Cinza Antas	300 m ²
Viseu, Portugal	Viriato Housing complex	Alpinina, Amarelo Macieira Vidraço Moleanos	10.000 m2

Local	Project	Material	Quantity
Porto, Portugal	Bolhão, superficial metro	Cinza Alpalhão	4.000 m2
Lisboa, Portugal	Almada Metro	Cinza Antas Rosa Porrinho	11.300 m2
Porto, Portugal	Antas, superficial metro	Cinza Alpalhão	10.000 m2
Liege, Belgium	Liege Airport	Branco Micaela	8.000 m2
London, UK	Worple Road, Wimbledon	Balmoral Red	5.000 m2
London, UK	Private House of Mr. Abramovic	Amarelo Macieira and Juparana Gold	Special pieces
Porto, Portugal	Sá Carneiro Airport	Kristall White Negro Fino	80.000 m2
Dubai, UAE	Mall of the Emirates (Shopping Mall)	Juparana Gold Negro Zimbabwe	40.000 m2
Coimbra, Portugal *	Forum de Coimbra (centro comercial)	Multicolor Slate Amarelo Sahara Branco Vimieiro Azul Valverde	10.000 m2
Lisboa, Portugal	Cerâmica de Telheiras	Crema Marfil Dark Emperador Cinza Antas	12.000 m2
Viseu, Portugal *	Edificio Viriato II	Moleanos Limestone Amarelo Macieira	19.000 m2
Avila, Spain	Congress Center	Amarelo Real	15.000 m2
Frankfurt, Germany	Tectum Tower	Moca Crème	5.000 m2
Lisboa, Portugal	Obra Infante à Lapa	Imperial Gold, Azul Valverde, Travertino	7.000 m2
Castelo-Branco, Portugal	Forum de Castelo Branco (centro comercial)	FCR, Negro Impala, Giallo Aguiar, Ruby Cream, Icon Brown	9.000 m2
Luanda, Angola	Torres Atlântico	Afton Light Brown; Angola Black	4.500 m2
Lisboa, Portugal	36 Fogos em Chelas	Angola Black; Ataija Crème ND; Pedras Salgadas	6.000 m2
Tallaght, Ireland	Tallaght Town Center	Moleanos – Negro Aracruz	18.000 m2
Dublin, Ireland	Allegro	Moleanos	12.000 m2
Troia, Portugal	Troia Resort	Ataija Creme	9.500 m2
Luanda, Angola	Up Market Villas	African red, Rosalia, Azul Bahia, Angola Black	3.500 m2

Local	Project	Material	Quantity
Manama, Bahrain	Bahrain City Center (Shopping Mall)	Branco Desiree, Zimbabwe, Juparana, Jade Green, Soft Yellow	40.000 m ²
Vila Nova de Gaia, Portugal	Quinta das Palhacinhas	Estremoz Pele de Tigre bujardado	5.400 m ²
Aveiro, Portugal	Lote 25 e 26	Estremoz Tigrado bujardado	3.000 m ²
Luanda, Angola	Luanda Airport	Pedras Salgadas	12.000 m ²
Lisboa, Portugal	Estações de S. Sebastião	Cinza Ariz	11.000 m ²
Guimarães, Portugal	Espaço Guimarães (centro comercial)	Ardósia, Silver Pearl African Red	5.000 m ²
Baku, Azerbaijan	Presidential Palast	Amarelo Macieira	16.000 m ²
Braga, Portugal	Centro Comercial Bragaparque III	Negro Impala/ Amarelo Macieira	3.650 m ²
Lisboa, Portugal	Alto dos Moinhos	Moleanos Ataija Creme	9.000 m ²
Lisboa, Portugal	Edifício Mais Campo Grande	Branco Vimieiro, Creme Real, Negro Marquina	21.000 m ²
Vilamoura, Portugal	Vilamoura Beach Hotel	Travertino	15.000 m ²
Lagos, Portugal	Cascade Hotel	Crema Marfil ND/ Ara Perlato	
Beirut, Lebanon	Beirut City Centre	Branco Desiree, Juparana Gold, Soft Yellow, Blue Orissa	25.000 m ²
Riyadh, KSA	KAFD, Parcel 5.03	Beije Travertin	10.000 m ²
Mumbai, India	Chhatrapati Shivaji International Airport	Santa Cecilia	20.000 m ²

Sá Carneiro Airport – Porto, Portugal



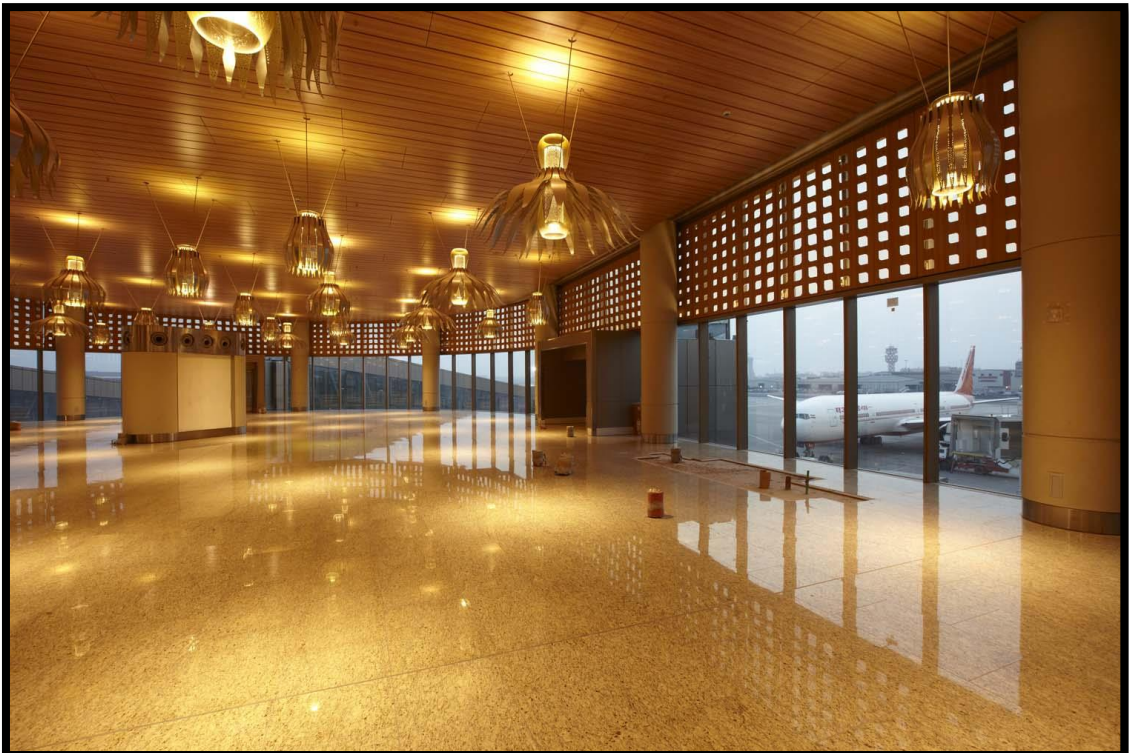
Tectum Tower- Germany



EPDC 5 - Ireland



Chhatrapati Shivaji International Airport - India



Radisson Hotel - Ireland



Royal Hibernian
Academy -
Ireland



Mall of the Emirates - Dubai





Fórum de Coimbra
Shopping Mall
Portugal



Fountain
Baku - Azerbaijan





Bahrain City Centre
Manama Bahrain



Location

The two factories are located in the country's central region, approximately 150 km distant from Porto (the second largest Portuguese city) and 120 km from one of most important Spanish borders. Therefore, the company relies on easy access routes, either by land or by sea, the latter being respectively at 120 km and 90 km far from the harbours of Leixões and Aveiro, two of the major ports in the north of Portugal.

Caparrosa – Tondela

This unit is the largest processing plant of ornamental granites in Portugal. It is fitted with 12 multi-blade gang-saws, bush-hammering and flaming machines, water-jet and diamond-wire cutters, several polishing and finishing equipment provided with numerical control to ensure a faultless final product. At international level, it is one of the most advanced plants for the production of cut to size claddings or pavings.

Besides granite, we also process Marbles, Limestone and Travertines, coming from Portugal and all over the world. The production line is equipped with the most up dated Simec-system. From the gang saws, resin/ treatment line to the polishing line, everything has been set up to provide a first quality product and a high production output thus having a monthly production capacity of 25.000 sqm.

Mundão – Viseu

This factory unit is solely dedicated to the mass production of skirting boards and standard, calibrated, polished and bevelled granites tiles (1; 1,5; 2 and 3 cm thick).

Fitted with two block-cutters of 80 blades each, with a production line for skirting and a production line for tiles, it also relies on a computer system for the quality control and on an automated/robot system for the packing tasks. It is the largest and most modern factory of this kind in Portugal.

Veiga – Sernancelhe

This is where the group headquarters are located. Here are the financial and accounting departments.

Transport to our facilities

Every day, our fleet of trucks make the transportation of raw blocks from the different quarries or block yards to our facilities.



Incoveca's truck



Factory of Caparrosa/ Tondela

Reception of the blocks

When the raw blocks arrive at our processing plants, they are washed one by one and checked again for defaults or problems, which may have escaped during the quarry control. Then they are categorized according to their dimensions, quality and colour pattern. After this selection is done the blocks are stocked and tagged (code bars) according to the scheduled processing / production plan.

Processing

Incoveca Granitos can process natural stone in two factories, being each factory specialized in a different product type:

- **Tondela - Non standard material**
- **Mundão- Standard material as tiles and skirting**

Processing of the non-standard material (Tondela)

The processing of the raw material is divided in different stages:

- 15.1.1) - Primary Sawing
- 15.1.2) - Surface polishing/ flaming
- 15.1.3) - Cut to size
- 15.1.4) - Quality control
- 15.1.5) - Packing

Primary Sawing:

The primary sawing is done according to a previously scheduled plan. It is done in multi-blade gang saws of Gaspari Menotti, Frugolli or BRA. Each of these gang saws has a sawing capacity of approximately 3000 sqm/month (considering an average thickness of 30 mm) and works 24 hours a day, operated by 3 teams working in shifts. Our company has 12 of these gang saws.



Surface Polishing

Multi-blade gang saws

The blocks, after having been sawn into slabs, proceed to the polishing or flaming line. The polishing is done by a 25 - head polishing machine from SIMEC (diamond + abrasive heads) using only water. This polishing line is able to polish, in an 8 hours shift, approximately 800 m² of slabs. The flaming process is done by two Pellegrini machines with a production capacity of 200 sqm per day each one in 2 shifts of 8 hours.

After the surface finishing process is completed, the slabs will all be marked with a code bar tag that shows the dimensions of the slab, thickness, the quality rating and the block that originated it. Then the slabs will be stocked according to their colour pattern.



Polishing Line



Slabs Code Bar tag



Flaming machine

Cut to size:

Once the slabs are ready (fully processed), they proceed to the next production stage, the cutting to size.

This may be done by a full automatic TAP S 7 550 from BRETON (multi-disc cutting machine with 7 diamond discs). This machine has a cutting capacity of approx. 500 m²/day (8 hours shift).

The machine receives the cutting schedules with the number of stones to be cut, dimensions of each stone and ref. by floppy disc. Before cutting the slab, the machine scans it to realize the exact dimension of the slab, then inserts the stone in the slab in order to get minimum waste percentage.

Or the cutting may also be done by new bridge cutters from CEI. These bridge cutters are equipped with state of the art technology. They are linked to the company's network and receive the cutting schedules directly from the office. These cutting machines too scan the slabs, but have a more advanced scanning system (they actually take a picture of the slab) which enables the operator to manually adjust the pieces, that are going to be cut, in order to avoid possible material defects.

The stone, after leaving the cutting stage, is marked with a reference and proceeds to the next stage.



Full automatic TAP S 7 550 from Breton

Quality Control

Before being packed in to the pallet that is going to make the voyage to the end destination, the ready cut pieces are randomly checked for thickness, dimensions and material pattern.

If any of the checked pieces deviates from the agreed tolerances we immediately stop the production and check the entire process to find and eliminate the cause of the problem.

Incoveca is open to receive suggestions as to improve the quality control and also to accept the presence of a quality controller of the clients' confidence.

Packing

All material is packed in wooden pallets. These pallets have a perimeter defence belt made of wood. This belt will prevent any damage to the pieces whenever the pallet is moved and by accident bumps in to another pallet or any other standing object. In the interior of the pallets, the different piles of stone will be separated from each other by a small wooden bracket. Afterwards the entire pallet is involved in plastic. This will protect the material from exterior aggressors like rain or moisture. As you can see 80 % of our packaging is biodegradable and therefore environmental friendly.



**Example of wooden packing
depending of client requirements**

Processing of the standard material (Mundão)

Standard Production:

- 30,5 x 30,5 cm
- 40 x 40 cm
- 50 x 50 cm
- 60 x 60 cm
- And other combination at 1; 1,5; 2 and 3 cm thickness for honed, polished or sandblast finishing.

Primary Sawing

The standard pieces can be sawn in a Pedrini block-cutter, whose capacity is 10 to 12 blocks per load, that is to say approximately 1500m²/ day for example sawn at two centimetres thickness, which will be then transformed to the demanded size in a production line of SIMEC/BRETON.



Pedrini Block-Cutter

Surface Finishing

Depending on the demanded surface finishing, the stripes from the block-cutter proceed to the sandblasting line or directly to the production line for honed and polished material.



**Breton polishing/ calibrating
Line**

Quality Control of stripes

After the sawing process, two stripes will be withdrawn from each block and will be dry-layed on the ground next to each other, thus representing the existing tonalities. Subsequently, our controller will analyse each stripe, defining the acceptable tonality for the project, managing the blocks according to location where they are going to be installed.

Quality Control of material

In the production line the visual monitoring of each piece results in the rejection of all pieces that present visible defects or abnormal inherent characteristics, like variation of grain and/or colour. As far as the dimensions are concerned a real time control is done by an electronic measurement instrument (using laser eyes) computer controlled that records the results and if bigger variations than the tolerances are detected, the material is instantly rejected and rerouted to a different pallet.

Packing and reference of the material

Each pallet will have a Packing-List posted on it. The packing list will make a precise description of each and every piece packed in that pallet and indicate the reference and exact quantity of pieces.

Packing: Normally, flooring is packed on wooden pallets with two rows of vertically packed stone. Each pallet has approximately a dimension of 125 x 65 cm and can contain between 20 to 25 m² of material (that is to say 1100 to 1400 kg).



Automated packing

Sea transportation to destination seaport

The material is transported to site by ship in 20 foot, dry van, containers. The vessel is loaded in Leixões (Portugal) seaport, which is about 150 km away from our processing plants, and usually proceeds, via Rotterdam, to its destination port. Each loaded container will be photographed, for insurance purposes, at its departure. Should there be any problems with a container we will immediately send to site our representative to activate all necessary procedures for the insurance to act.

Contacts:

Commercial and Project Department:

Address:

Caparrosa
3465-101 Cpo. De Besteiros
Portugal

Phone: +351 232 857 500

Fax: +351 232 857 508

Email: Incoveca@mail.telepac.pt

Production Department:

Address:

Caparrosa - Tondela
3465-101 Cpo. De Besteiros
Portugal

Phone: +351 232 857 500

Fax: +351 232 857 508

Email: Incoveca@mail.telepac.pt

Parque Ind. Mundão - Mundão

3500-570 Viseu

Portugal

Phone: +351 232 929 400

Fax: +351 232 929 409

Email: Incoveca@mail.telepac.pt

Financial Department:

Address

Veiga
3640-290 Sernancelhe
Portugal

Phone: +351 254 550 010

Fax: +351 254 550 019

Email: Incoveca@mail.telepac.pt